



Fibre Channel Data Encryption Device

Turbo Start Guide

Version 1.0.1



BOSANOVA, Inc.
2012 W. Lone Cactus Dr.
Phoenix, AZ 85027

Phone: 866-865-5250
Email: info@theq3.com
Web: www.theq3.com

The contents of this manual may be revised without prior notice.

The contents of this manual shall not be disclosed in any way or reproduced in any media without the express written permission of BOSANOVA, Inc.

All RIGHTS RESERVED, BOSaNOVA.

No part of this work may be reproduced in any form or by any means – graphic, electronic or mechanical, including photocopying, recording, taping or storage in an information retrieval system – without prior written permission of the copyright owner.

The trademarks, logos and service marks (“Marks”) displayed herein are the property of BOSANOVA or other third parties.

You are not permitted to use these Marks without the prior written consent of BOSaNOVA or such appropriate third party.

Pre-Requisites:

- Q³ pack which includes:
 - 1 x Q³ unit
 - 2 x rack mounting bracket
 - 1 x 2m fibre cable
 - 1 x 2m Ethernet Cross-Over Cable
 - 1 x Spare key chip
 - 1 x Power cable
 - 1 x Manual
 - 1 x Qonfig3 software manual
 - 1 x Installation CD
 - 4 x Rubber Feet
- A Windows based PC with a CD-ROM drive and Ethernet network port
- Physical access to the Q³ unit from the Windows based PC
- Sufficient access rights on the Windows PC to allow software installation
- *** MAKE A NOTE OF THE Q³ SERIAL NUMBER IN THE SPACE PROVIDED ON THE ENCLOSED WORKSHEET *****

Pre-Installation:

Before installing the Q³ into your environment perform the following steps. This will ensure that your current backup procedure works correctly and you are working within a stable operating environment:

- The Q³ device is not operating system version specific however, depending on the host operating system, you should reboot the server to ensure any automatically downloaded patches and drivers are applied to the system. This is particularly relevant to systems with an automatic update function e.g. Microsoft Windows
- Perform a test backup and restore to ensure the tape hardware and backup software are working correctly
- When complete eject any tapes from the tape device
- Power down the host if required e.g. iSeries users can vary off the tape device
- Power down the tape device

Q³ Installation:

- For rack installation locate the Q³ in the rack utilizing the supplied rack mounting brackets, adjusting to fit the rack depth. Due to rack manufacturer variations, rack mounting bolts are not supplied
 - For desktop use all rack mounting brackets should be removed from the Q³ and the 4 rubber feet attached
 - Locate the cable that connects the host / server to the tape device (or switch in a switched environment). Disconnect this cable connect it to the Q³ port labelled Host
 - Connect the supplied 2m fibre cable from the Q³ port labelled Tape to the tape device
 - Power up the tape device
 - When the tape device has completed its power on self test routines, power up the Q³
 - When the Q³ power on self tests have completed information about the attached tape drive will be displayed
 - When the Q³ has completed its power on self test routines, power up the host or vary on the tape drive as required
-

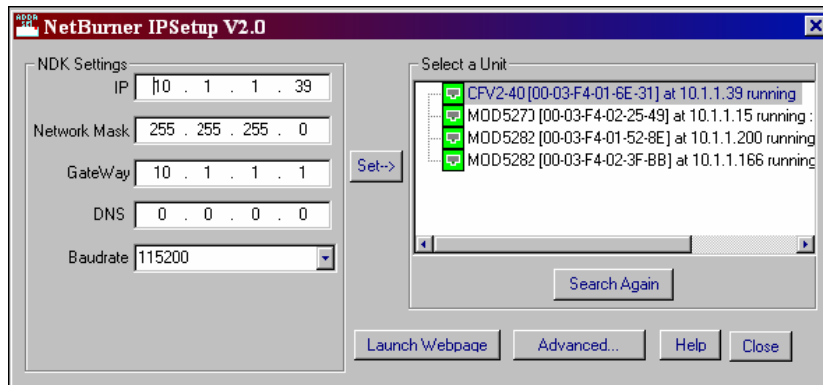
Setting the IP address

The unit is supplied with an Ethernet cross over cable which can be used to connect a laptop or PC directly to the unit without the need of a hub or switch. If you have access to the network the unit can be connected in the normal way with standard cables. *Do not try to use the supplied cross over cable to connect to a standard network!*

Once you are connected follow the procedure below.

Network Configuration

1. From the CD run IPSetup.exe. You will see a dialog box like the one below:



2. Click the "Search Again" button to locate your unit in the "Select a Unit" pane. If your Q3 fibre unit does not appear, verify the power and link LED's on your MNGT connection on the front panel are illuminated; if not, correct any cabling errors. Note that IPSetup uses a UDP broadcast protocol similar to BOOTP and will **not** operate through a router.

3. **A.** If your network **supports** DHCP:

The assigned IP address will appear in the "Select a Unit" pane

B. If your network does **not** support DHCP:

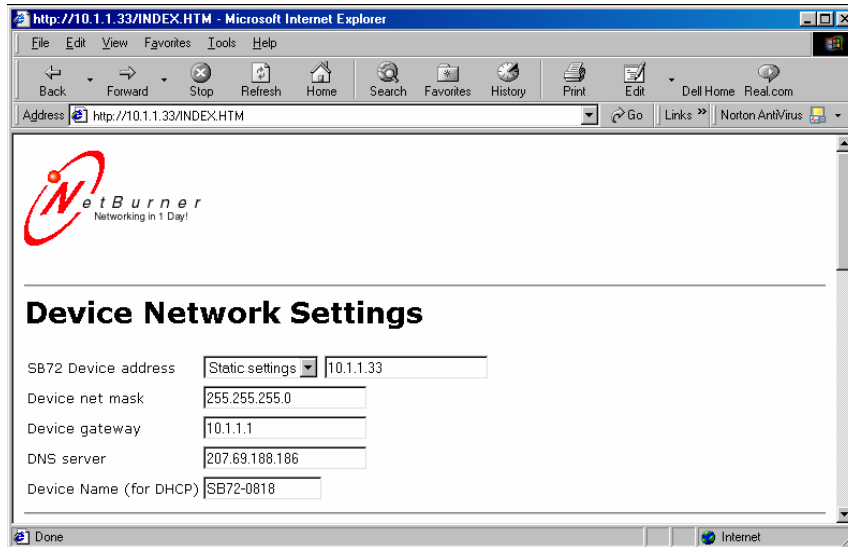
Configure the IP Address and Mask fields. If you need help selecting values, see the Selecting an IP Address section of this manual. After you have entered the values, select the "Set" button to configure the Q3 fibre unit with the new parameters.

4. Verify the network connection is working properly by executing the following command from a command prompt: "ping <ip address>" For example type "ping 10.1.1.33" (without the quotes) at the command prompt and press the Enter key on your keyboard.

Operational Configuration

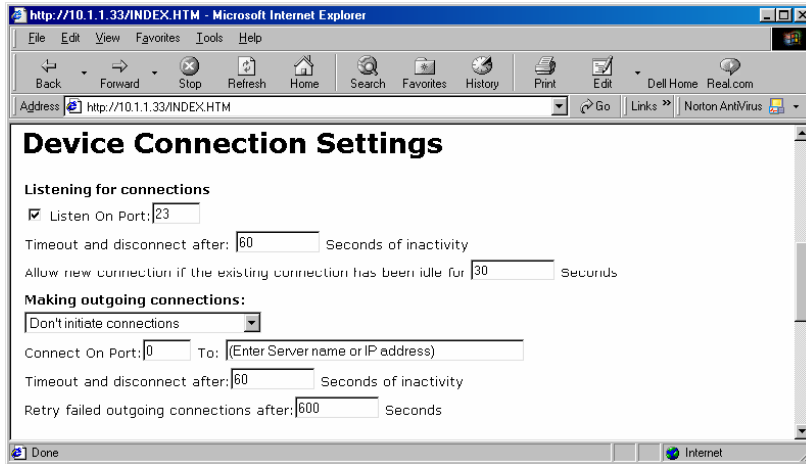
Once the network parameters have been configured, you can use the web server interface to modify setting of the Q3 Fibre. To access the web page on the unit, open a web browser and enter the numeric IP Address in the address field.

Device Network Settings



SB72 Address	Device	Selects the IP address of the Q3 fibre unit. If DHCP is selected, the Q3 will obtain IP address information automatically, including the net mask, gateway, and DNS server. If Static is selected, you need to supply the static IP address in the edit box to the right, as well as the other device network settings.
Device net mask		When using a static IP address, enter the net mask in this field.
Device Gateway		When using a static IP address, enter the IP address of the Gateway in this field.
DNS Server		When using a static IP address, enter the IP address of the DNS Server in this Field.

Device Connection Settings



Server Listen Port:	Select the checkbox and enter the listening port number you want the TCP serial server to listen on for incoming connections. The default is set to 1000
Client Activity Timeout and Disconnect	If no activity is detected on a TCP/IP connection the TCP server will drop the connection. The factory setting is 0 seconds
Client Override Timeout	If no activity is detected on a TCP/IP connection within this timeout period, the TCP server will disconnect the current TCP/IP connection and allow the new incoming connection request to connect. The factory setting is 0.
Outgoing Connections	If this option is enabled, the Q3 will initiate a connection to an outside destination when the selected conditions are met The three options are: <ul style="list-style-type: none"> • Don't Initiate Connections • Connect on Power-up • Connect when receiving serial data This will be set to Don't Initiate Connections. <i>Do not change.</i>
Outgoing Port Number	Destination port number (Not normally used)
Outgoing Address	Either the name (e.g. www.theQ3.com) or numeric IP address (e.g. 10.1.1.2) of the destination. (Not normally used)
Outgoing Timeout	Inactivity timeout for the outgoing connection (Not normally used)

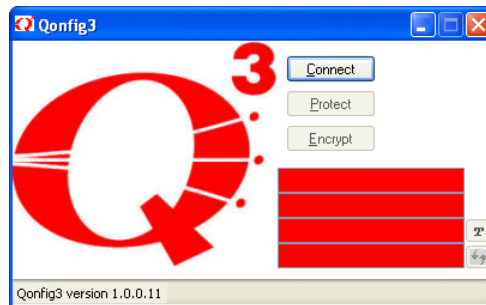
Software Installation:

The Q³ GUI enables configuration of the Q³ device. The software runs on Microsoft Windows and may be installed on a Windows server or client

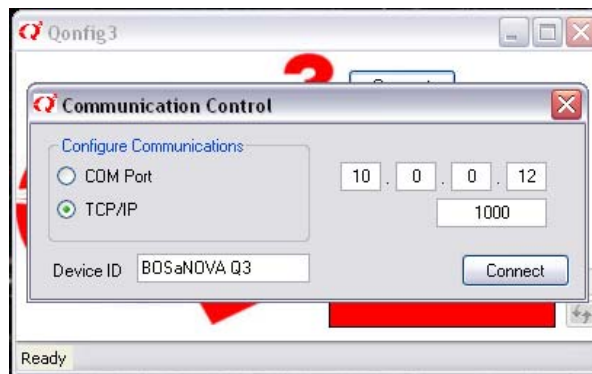
- Place the Q³ GUI CD into your CD-ROM drive
- In Windows click 'Start', click 'Run' and type d:\setup.exe (where 'd' is the drive letter of your CD-ROM drive)
- Follow the on-screen instructions to install the software

Configuring the Q3:

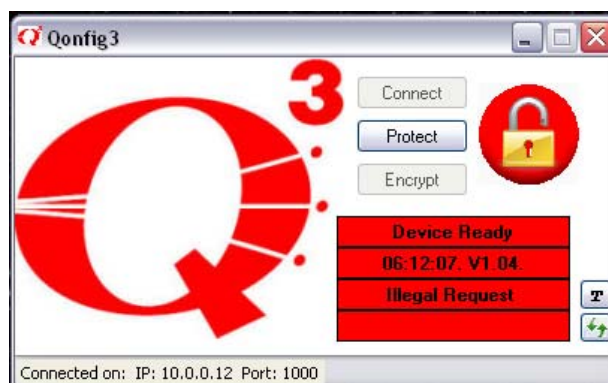
- To start the configuration software click 'Start', 'All Programs', 'BOSaNOVA', 'Qonfig3'



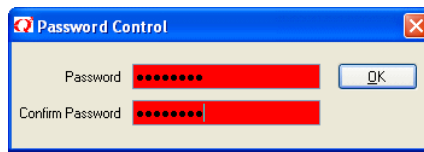
- Within Qonfig3 click 'Connect' - the software will then bring up a new box and ask if you want to connect via COM Port or TCP/IP, as there is no COM Port on the Q3 Fibre, you will need to connect via TCP/IP



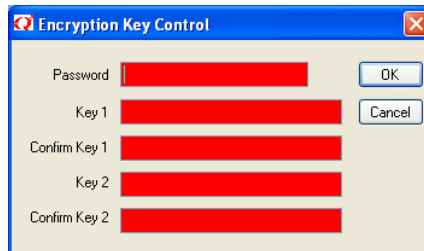
- For this the settings are IP Address: 10.0.0.12 (if unchanged) and Port 1000 (this cannot be changed)
- Once this has been completed you will be connected to the Q3



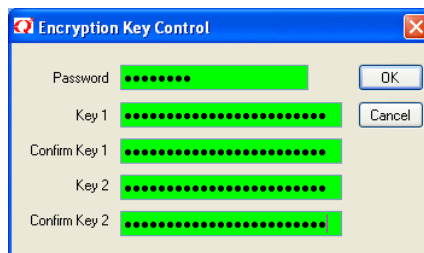
- You will then to click Protect, this is to set the password for the Q3



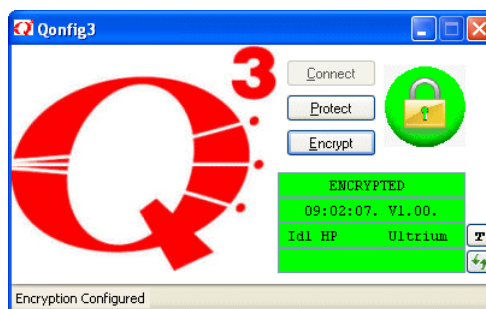
- Enter an access password of eight characters or more, verify the password – this password is to allow access to the Q³ unit for configuration purposes
- Click the Encrypt button



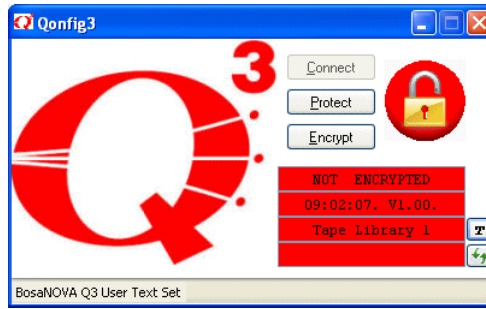
- Enter the password and Encryption Keys – each Key must be 24 characters

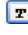



- ***** MAKE A NOTE OF THE ENCRYPTION KEYS USED IN THE SPACE PROVIDED ON THE ENCLOSED WORKSHEET *****
- Clicking OK will set the Encryption Keys and set encryption on



- In a multi-Q³ environment you may wish to visually identify each Q³ device.
- Type the text you wish to use to identify the Q³ unit on 3rd display line e.g. Tape Library 1



- Click the  button to set the text
- Encryption can now be toggled on and off using the 'Encrypt' button
- During tape operations click the  button to update the GUI with the Q³ LCD display text
- Padlock icons on the top line of the Q³ LCD indicate whether the device is in secure or un-secure mode. Secure mode is indicated by closed padlock icons and un-secure mode by open padlock icons
- When the Q³ has been configured the serial cable can be removed

Important Notes:

- When the Q³ device is in secure mode, media created or written before the Q³ device was installed will not be recognized by your system and your backup software may suggest that the media should be initialized. To read previously written media set the Q³ unit to un-secure mode using the Q³ GUI configuration software
-

Serial Number and Encryption Key Worksheet:

To ensure that you are able to reconfigure your Q³ unit in the event of a disaster recovery situation or power outage, it is *vital* to keep a copy of your Q³ serial number and designated original encryption key in a separate, secure location.

Q³ Serial Number:

--	--	--	--	--

Encryption Key 1 (24 Characters):

--	--	--	--	--	--	--	--	--	--	--	--	--	--	--	--	--	--	--	--	--	--	--

Encryption Key 2 (24 Characters):

--	--	--	--	--	--	--	--	--	--	--	--	--	--	--	--	--	--	--	--	--	--	--

******* IMPORTANT *******

THE INFORMATION CONTAINED ON THIS PAGE
SUPPORTS YOUR BUSINESS CONTINUITY AND
DISASTER RECOVERY PROCEDURES AND MUST
BE STORED IN A SEPARATE SECURE LOCATION
ALONG WITH THE SUPPLIED SPARE KEY CHIP

IF YOU DO NOT HAVE ACCESS TO THIS
INFORMATION YOU WILL BE UNABLE TO
RESTORE FROM ENCRYPTED MEDIA

Replacement Q³ chips may be ordered from:

BOSANOVA, Inc.

Technical Support, 2012 W. Lone Cactus Dr. Phoenix, AZ 85027
Tel: 866-864-5250, Fax: 623-516-8697, Website: www.theq3.com, Email: info@theq3.com



BOSANOVA, Inc.
2012 W. Lone Cactus Dr.
Phoenix, AZ 85027

Phone: 866-865-5250
Email: info@theq3.com
Web: www.theq3.com
