



SCSI Data Encryption Device

Turbo Start Guide

Version 1.0.1



BOSANOVA, Inc.
2012 W. Lone Cactus Dr.
Phoenix, AZ 85027

Phone: 866-865-5250
Email: info@theq3.com
Web: www.theq3.com

The contents of this manual may be revised without prior notice.

The contents of this manual shall not be disclosed in any way or reproduced in any media without the express written permission of BOSANOVA, Inc.

All RIGHTS RESERVED, BOSaNOVA.

No part of this work may be reproduced in any form or by any means – graphic, electronic or mechanical, including photocopying, recording, taping or storage in an information retrieval system – without prior written permission of the copyright owner.

The trademarks, logos and service marks (“Marks”) displayed herein are the property of BOSANOVA or other third parties.

You are not permitted to use these Marks without the prior written consent of BOSaNOVA or such appropriate third party.

Pre-Requisites:

- Q³ pack which includes:
 - 1 x Q³ unit
 - 2 x rack mounting bracket
 - 1 x 2m SCSI cable
 - 2 x SCSI terminator (LVD or HVD)
 - 1 x Serial cable
 - 1 x USB to serial cable
 - 1 x Spare key chip
 - 1 x Power cable
 - 1 x Manual
 - 1 x Installation CD
- A Windows based PC with a CD-ROM drive and either a serial or USB port
- Physical access to the Q³ unit from the Windows based PC
- Sufficient access rights on the Windows PC to allow software installation

- *** MAKE A NOTE OF THE Q³ SERIAL NUMBER IN THE SPACE PROVIDED ON THE ENCLOSED WORKSHEET *****

Pre-Installation:

Before installing the Q³ into your environment perform the following steps. This will ensure that your current backup procedure works correctly and you are working within a stable operating environment:

- The Q³ device is not operating system version specific however, depending on the host operating system, you should reboot the server to ensure any automatically downloaded patches and drivers are applied to the system. This is particularly relevant to systems with an automatic update function e.g. Microsoft Windows
- Perform a test backup and restore to ensure the tape hardware and backup software are working correctly
- When complete eject any tapes from the tape device
- Power down the host
- Power down the tape device

Q³ Installation:

- For rack installation locate the Q³ in the rack utilizing the supplied rack mounting brackets, adjusting to fit the rack depth. Due to rack manufacturer variations, rack mounting bolts are not supplied
 - For desktop use all rack mounting brackets should be removed from the Q³ and the 4 rubber feet attached
 - Locate the cable that connects the host / server to the tape device. Disconnect this cable from the tape device and connect it to one of the Q³ ports labelled SCSI to Host
 - Connect the supplied 2m SCSI cable from the Q³ port labelled SCSI to Tape to the tape device
 - On the Q³, the second SCSI to Host port must be terminated using the supplied SCSI terminator or used to daisy chain additional devices without data encryption
 - Use the second SCSI terminator (supplied) to terminate the tape device.
 - Power up the tape device
 - When the tape device has completed its power on self test routines, power up the Q³. When the Q³ power on self tests have completed information about the attached tape drive will be displayed
 - When the Q³ has completed its power on self test routines, power up the host.
-

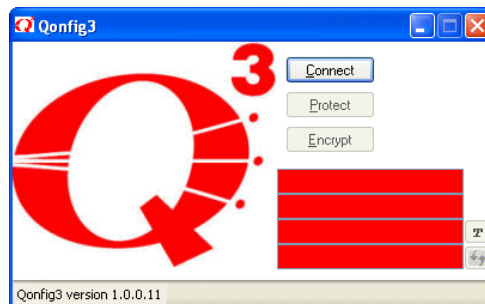
Software Installation:

The Q³ GUI enables configuration of the Q³ device. The software runs on Microsoft Windows and may be installed on a Windows server or client located within the vicinity of the Q³ device

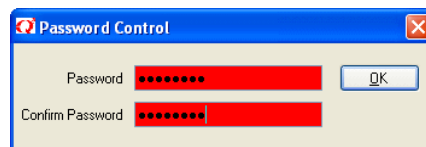
- Place the Q³ GUI CD into your CD-ROM drive
- In Windows click 'Start', click 'Run' and type d:\setup.exe (where 'd' is the drive letter of your CD-ROM drive)
- Follow the on-screen instructions to install the software

Configuring the Q3:

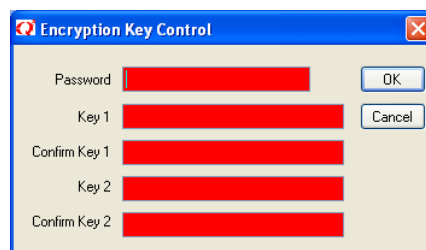
- If your PC has a serial port, connect the serial cable (supplied) from a free serial port on your PC to the serial port on the front of the Q³ unit
- If your PC *does not* have a serial port then connect the USB-to-serial cable (supplied) from a free USB port on your PC, to the serial port on the front of the Q³ unit. You may need to install drivers for the USB-to-serial cable
- To start the configuration software click 'Start', 'All Programs', 'BOSaNOVA', 'Qonfig3'
- Within Qonfig3 click 'Connect' - the software will scan for Q³ devices



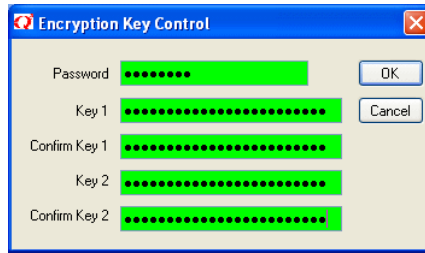
- If a password is not already set you will be prompted to set a password



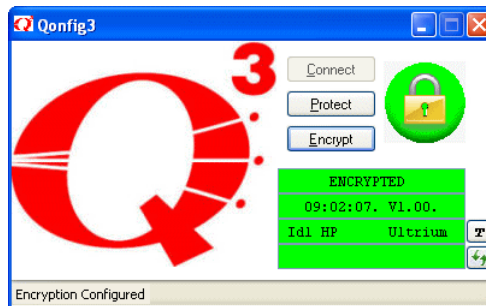
- Enter an access password of eight characters or more, verify the password – this password is to allow access to the Q³ unit for configuration purposes
- Click the Encrypt button



- Enter the password and Encryption Keys – each Key must be 24 characters
-





- *** MAKE A NOTE OF THE ENCRYPTION KEYS USED IN THE SPACE PROVIDED ON THE ENCLOSED WORKSHEET ***
- Clicking OK will set the Encryption Keys and set encryption on



- In a multi-Q³ environment you may wish to visually identify each Q³ device.
- Type the text you wish to use to identify the Q³ unit on 3rd display line e.g. Tape Library 1



- Click the  button to set the text
- Encryption can now be toggled on and off using the 'Encrypt' button
- During tape operations click the  button to update the GUI with the Q³ LCD display text
- Padlock icons on the top line of the Q³ LCD indicate whether the device is in secure or un-secure mode. Secure mode is indicated by closed padlock icons and un-secure mode by open padlock icons
- When the Q³ has been configured the serial cable can be removed

Important Notes:

- When the Q³ device is in secure mode, media created or written before the Q³ device was installed will not be recognized by your system and your backup software may suggest that the media should be initialized. To read previously written media set the Q³ unit to un-secure mode using the Q³ GUI configuration software

Serial Number and Encryption Key Worksheet:

To ensure that you are able to reconfigure your Q³ unit in the event of a disaster recovery situation or power outage, it is *vital* to keep a copy of your Q³ serial number and designated original encryption key in a separate, secure location.

Q³ Serial Number:

--	--	--	--	--

Encryption Key 1 (24 Characters):

--	--	--	--	--	--	--	--	--	--	--	--	--	--	--	--	--	--	--	--	--	--	--

Encryption Key 2 (24 Characters):

--	--	--	--	--	--	--	--	--	--	--	--	--	--	--	--	--	--	--	--	--	--	--

******* IMPORTANT *******

THE INFORMATION CONTAINED ON THIS PAGE
SUPPORTS YOUR BUSINESS CONTINUITY AND
DISASTER RECOVERY PROCEDURES AND MUST BE
STORED IN A SEPARATE SECURE LOCATION ALONG
WITH THE SUPPLIED SPARE KEY CHIP

IF YOU DO NOT HAVE ACCESS TO THIS
INFORMATION YOU WILL BE UNABLE TO RESTORE
FROM ENCRYPTED MEDIA

Replacement Q³ chips may be ordered from:

BOSANOVA, Inc.

Technical Support, 2012 W. Lone Cactus Dr. Phoenix, AZ 85027

Tel: 866-864-5250, Fax: 623-516-8697, Website: www.theq3.com, Email: info@theq3.com



BOSANOVA, Inc.
2012 W. Lone Cactus Dr.
Phoenix, AZ 85027

Phone: 866-865-5250
Email: info@theq3.com
Web: www.theq3.com
